



**365 DAYS OF
URBAN EXCITEMENT**

SERVICED SUITES | LIFESTYLE SHOPPE

OVERLOOKING A PRISTINE HORIZON

Perched high above the ground, LikasVue features seven layouts to cater to different residential needs. So whether it is a dual-key feature or extra room to spare, these units have one thing in common: scenic view.



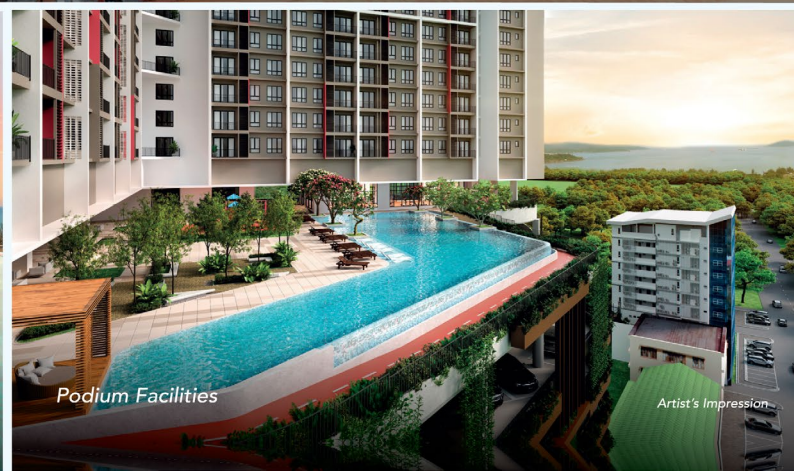
Facade

Artist's Impression



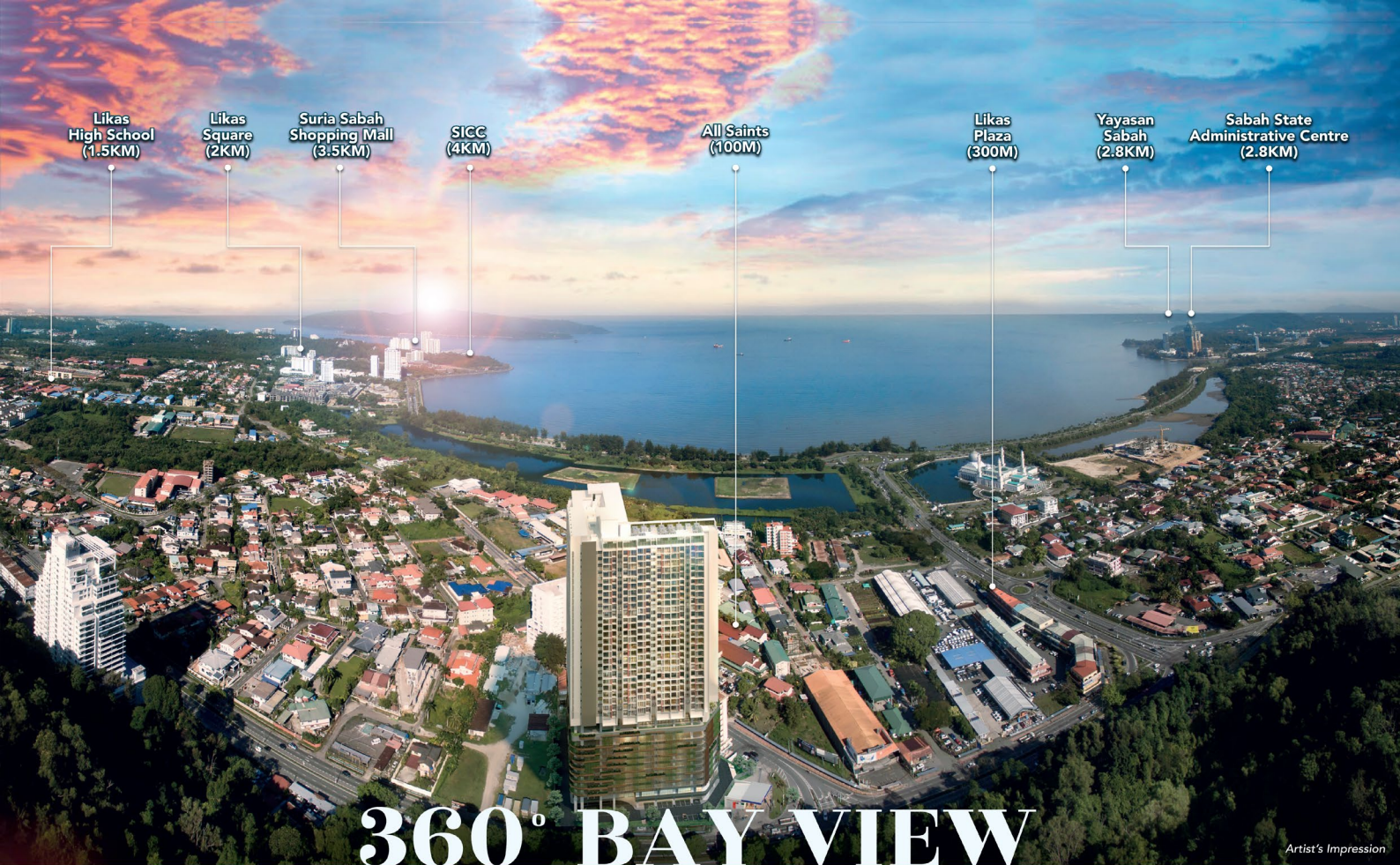
Pool

Artist's Impression



Podium Facilities

Artist's Impression



Artist's Impression

360° BAY VIEW PERFECTION

VERTICAL LIVING DESIGNED AROUND ONE EXCLUSIVE PANORAMA

Live, work and play in Kota Kinabalu's latest most sought-after address. Offering different but equally stunning views of the city and the sea, LikasVue boasts 36 storeys of modern living featuring wellness facilities and excellent connectivity, ideal for those seeking lifelong residence and business ventures.



Dual-Key



Ample
Facilities



Prime
Location



Retail &
Services



Hospitality



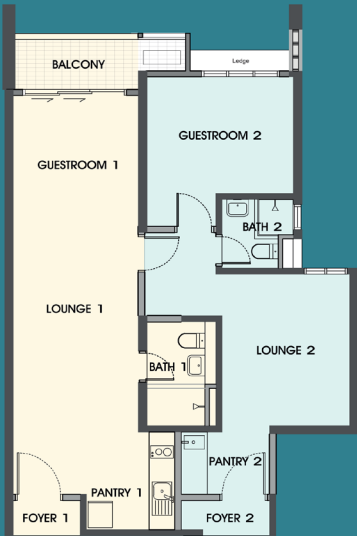
FACILITIES PLAN



FLOOR PLAN

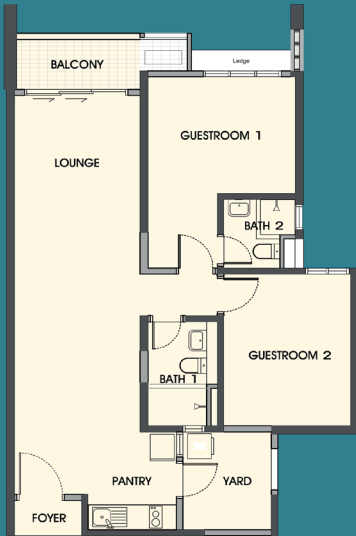
TYPE A1 (DUAL-KEY)

Level 11 to 25
884 sq. ft.



TYPE A2

Level 26 to 35
884 sq. ft.



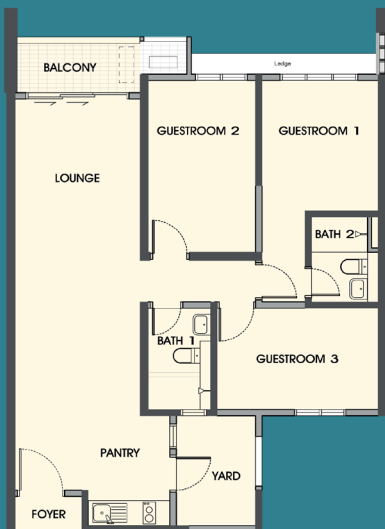
TYPE B1 (DUAL-KEY)

Level 11 to 25
973 sq. ft.



TYPE B2

Level 26 to 35
973 sq. ft.



KEY PLAN



TYPE C (DUAL-KEY)

Level 11 to 35
1051 sq. ft.



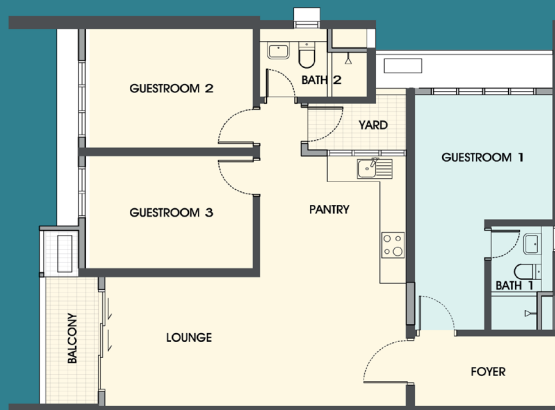
TYPE D (DUAL-KEY)

Level 11 to 35
1052 sq. ft.



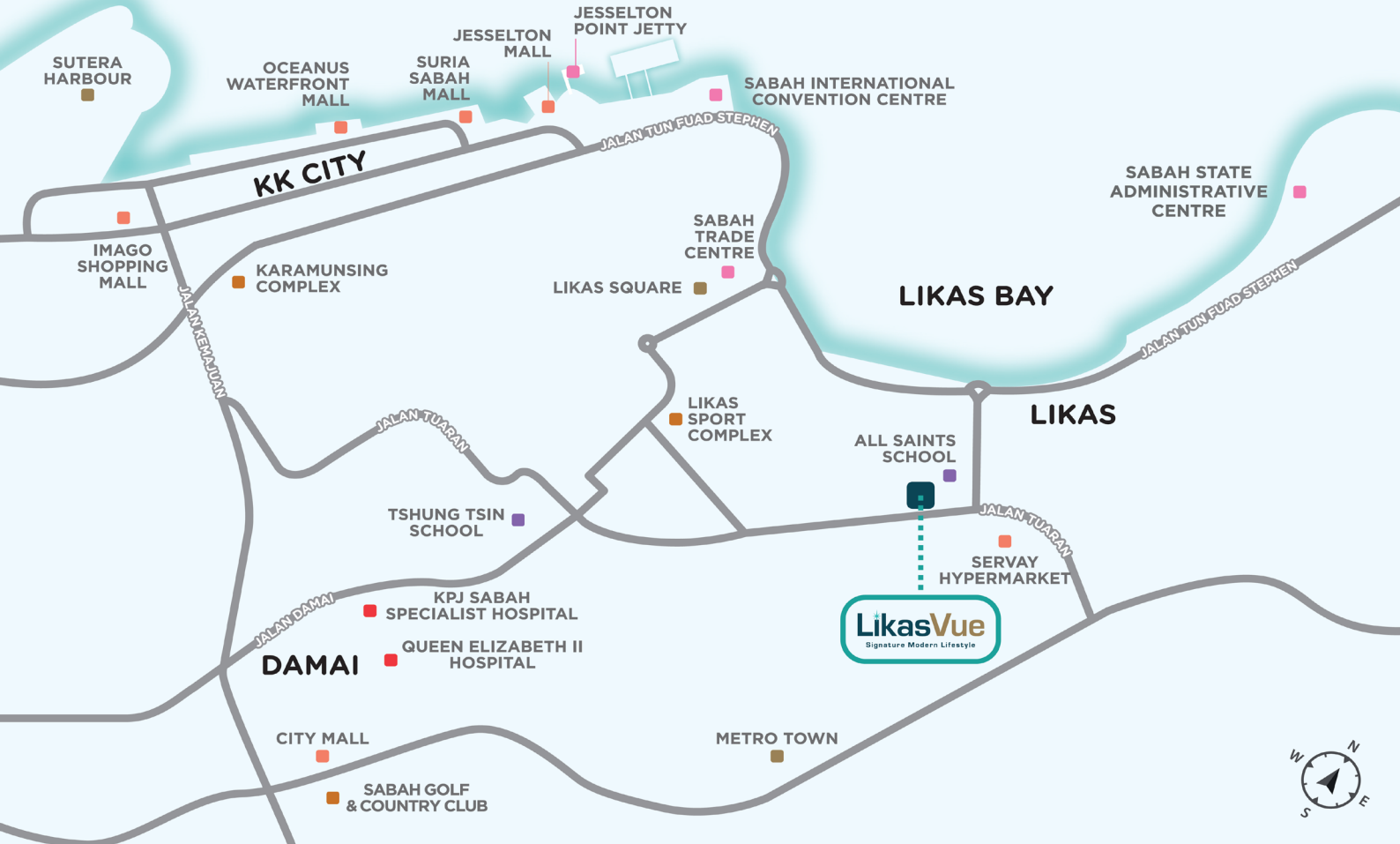
TYPE E (DUAL-KEY)

Level 11 to 35
1056 sq. ft.



STRATEGIC LIVING | WISE INVESTMENT

Overlooking the pristine Likas Bay and set among various landmarks in the centre of the district, LikasVue comes with an address that connects you to everyday convenience at a stone's throw. From schools to grocery markets and renowned medical centres, LikasVue is the city's strategic bay-view residence.



ASIAN PAC HOLDINGS BERHAD (129-T)
AT THE HELM OF DYNAMIC DEVELOPMENTS

Office

Harmoni Bumiria Sdn Bhd (896251-P),
G-38-G Signature Office,
KK Times Square, Off Coastal Highway,
88100 Kota Kinabalu, Sabah.

LikasVue Sales Gallery

Lot 017528433 ,
Jalan Teluk Likas, Likas,
Kota Kinabalu, Sabah.

088 - 203 993
017 - 597 7866



This project is also known as 'Vista Likas' as approved by the authorities. The information contained herein is subject to change without notification, whenever necessary or as may be required by the developer, relevant authorities and/or developer's architect. All pictures and illustrations are artist's impression only. While every reasonable care has been taken in preparing and providing this information, the developer and its affiliates/agents cannot be held responsible for any inaccuracies or omissions and it does not constitute and/or form part of an offer, inducement, representation, warranty or contract.